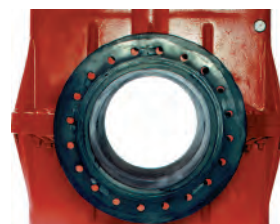
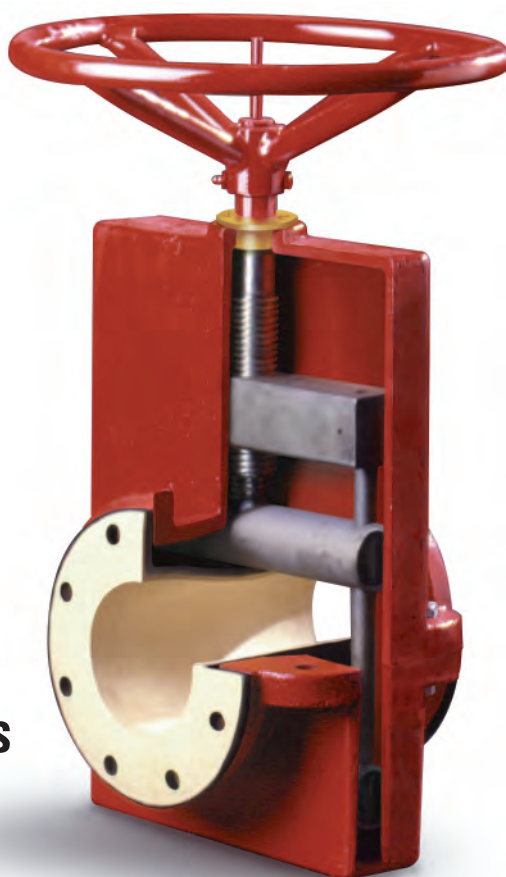


Manual Pinch Valves



- ▶ Same Face-to-Face As Gate, Plug and Ball Valves To 12"
- ▶ 100% Full Port
- ▶ Bi-Directional, Drop-Tight Shutoff
- ▶ No Packing To Maintain, Ever
- ▶ Sleeve Is Only Wetted Part: No Need For Alloy Bodies
- ▶ Self-Cleaning
- ▶ Excellent Throttling Characteristics



The Series 75's flexible sleeve isolates the valve's working parts.



Two pinch bars close on centerline, eliminating turbulence and wear, and provide a smooth closing venturi that self-cleans with each operation.



Fully closed, the Series 75 ensures drop-tight, bi-directional shutoff and an intrinsically safe design with no packing to maintain.

16



▶ Power Plants

FGD systems, scrubber systems, coal handling, fly ash, bottom ash



▶ Wastewater Treatment Plants

Sludge handling, grit removal, raw sewage, lime, carbon slurry, digester gas



▶ Mining

Tailings, flotation control, thickener underflow lines, numerous other slurry applications



▶ Chemical Processes

Corrosive and abrasive material, powders, pellets, waste treatment



REGOM INSTRUMENTS s.r.o.

Brabcova 1159 / 2

147 00 Praha 4

CZECH REPUBLIC

Tel: +420 241 402 206

Fax: +420 241 400 290

Mail: regom@regom.cz

Skype: regom-office

www.regom.cz